

exe | QUADRANTE



MARINE & HARBOUR ENGINEERING
DESIGNING . DELIVERING . ADDING VALUE



EXE-QUADRANTE is an Engineering Consultancy Company with a global footprint specialized in Port and Marine Engineering.

With a highly experienced team of civil, coastal, hydraulic, and structural engineers, combining more than 68 years of experience, EXE-QUADRANTE proposes a competitive offer in the marine and harbour engineering sector, to deliver ground-breaking and value added solutions for an ever challenging world.

The main purpose of EXE-QUADRANTE is to support our clients accomplish their own mission. We offer a full and comprehensive range of engineering capabilities, from project planning to project development and execution, to deliver sustainable, innovative and economically efficient marine infrastructures.



EXE ENGENHARIA boasts a remarkable 21 year history in marine and harbour engineering. Though the business started in 2000, their founding partners have more than 48 years of combined experience developing port projects all over the world. Since its foundation EXE ENGENHARIA has partaken in several major maritime and port projects around the world offering full range of consulting engineering services and value added solutions for their Clients.

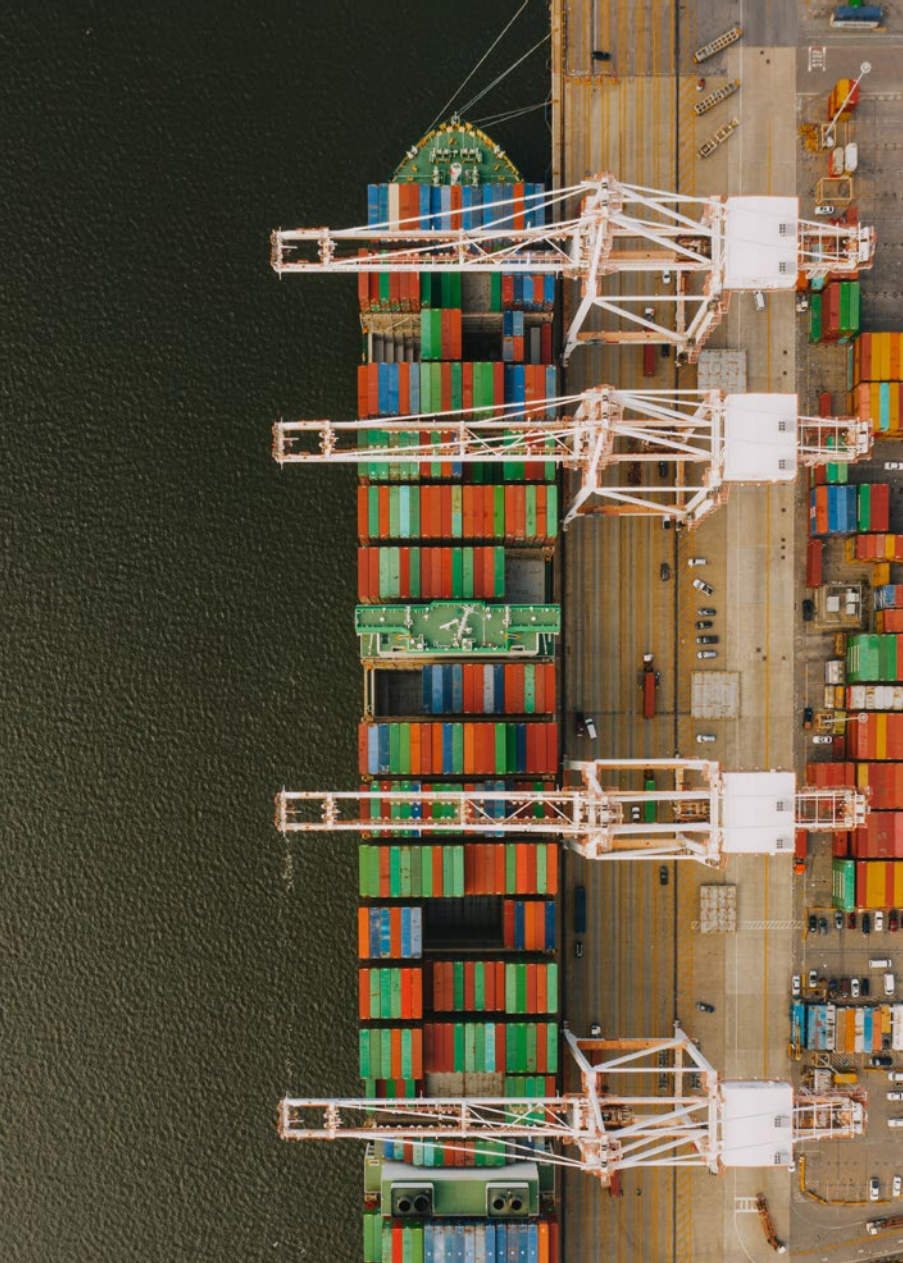


QUADRANTE

QUADRANTE is an international consultancy firm of engineers and architects with over 25 years of industry experience. Headquartered in Lisbon and with on-the-ground offices worldwide, QUADRANTE have built a comprehensive track record of projects in areas such as airports, highways, railroads and ports becoming a leading engineering consultancy firm in Portugal.



ISO 9001
ISO 14001



WHAT WE STAND FOR

- 68 plus years of combined experience adding value in Port and Marine Engineering consultancy.
- Delivery capability and efficient management of engineering solutions across all stages of the project's lifecycle.
- Highly skilled and experienced team of civil, coastal, hydraulic, and structural engineers
- Integrated engineering solutions, combining expertise from different areas: Transport, Buildings; Environment and Climate Change, Hydraulics, Industry and Energy, Airports and Project Management and Supervision.
- Outstanding history and experience in unique marine engineering projects, ranging from container terminals, liquid and solid bulk terminals, general cargo terminals, ferries and cruise terminals, recreational ports, and military installations.
- International footprint, with offices on three different continents (Europe, Africa and Latin America)
- Experience working with a wide range of clients, including, engineering contractors, public port administrations and private port operators.
- Ambitious Sustainable Development Goals focused on the best solutions for our customers.

PRESENCE

Curitiba
Lisbon
Accra
Algiers
Bucharest
Lima
London
Luanda
Maputo
Milan
Paris
Oporto
Santiago
São Paulo

● Headquarters ○ Office ● Project



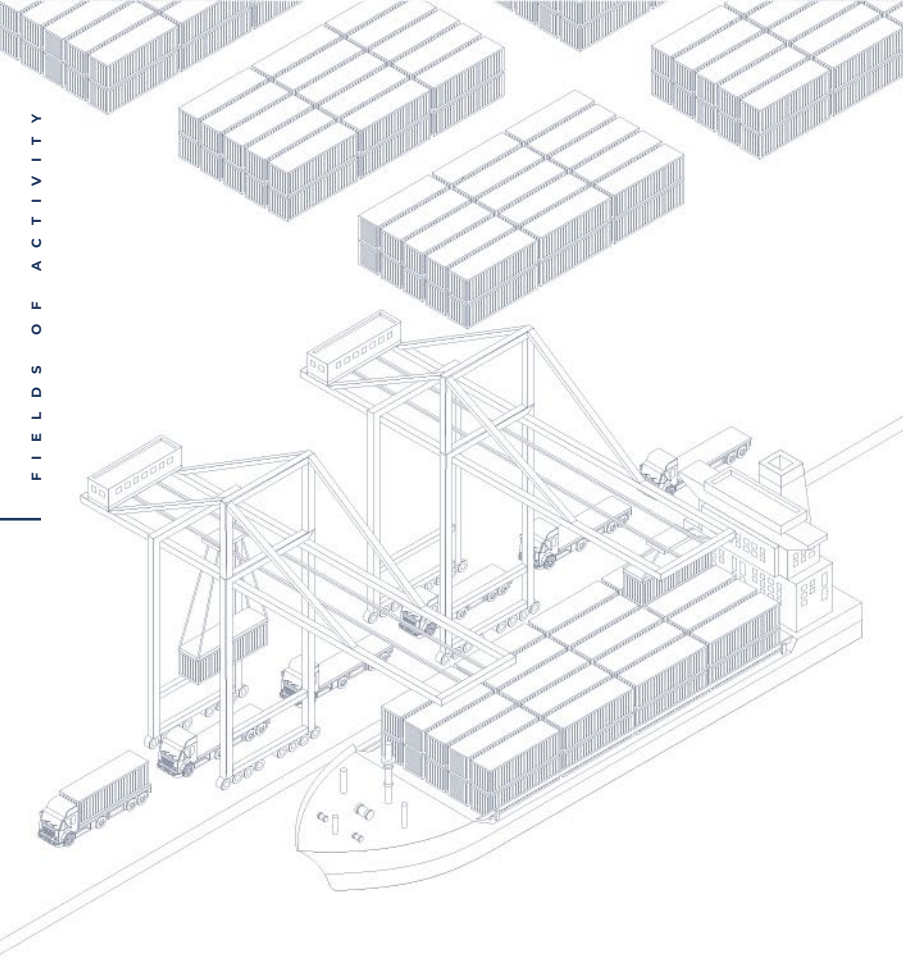


FIELDS OF ACTIVITY

MARITIME CARGO TERMINALS

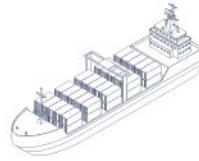
PASSENGER AND RECREATIONAL PORTS

COASTAL ENGINEERING

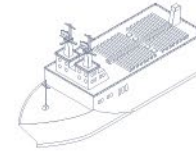


MARITIME CARGO TERMINALS

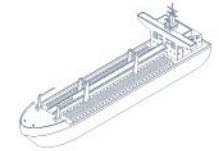
Container Terminals



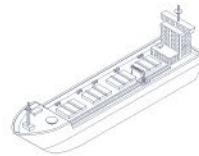
RoRo Terminals



General Cargo Terminals



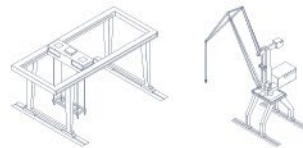
Bulk Terminals



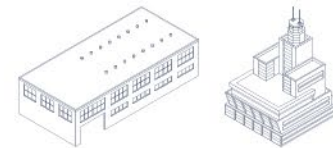
Liquid Bulk Terminals

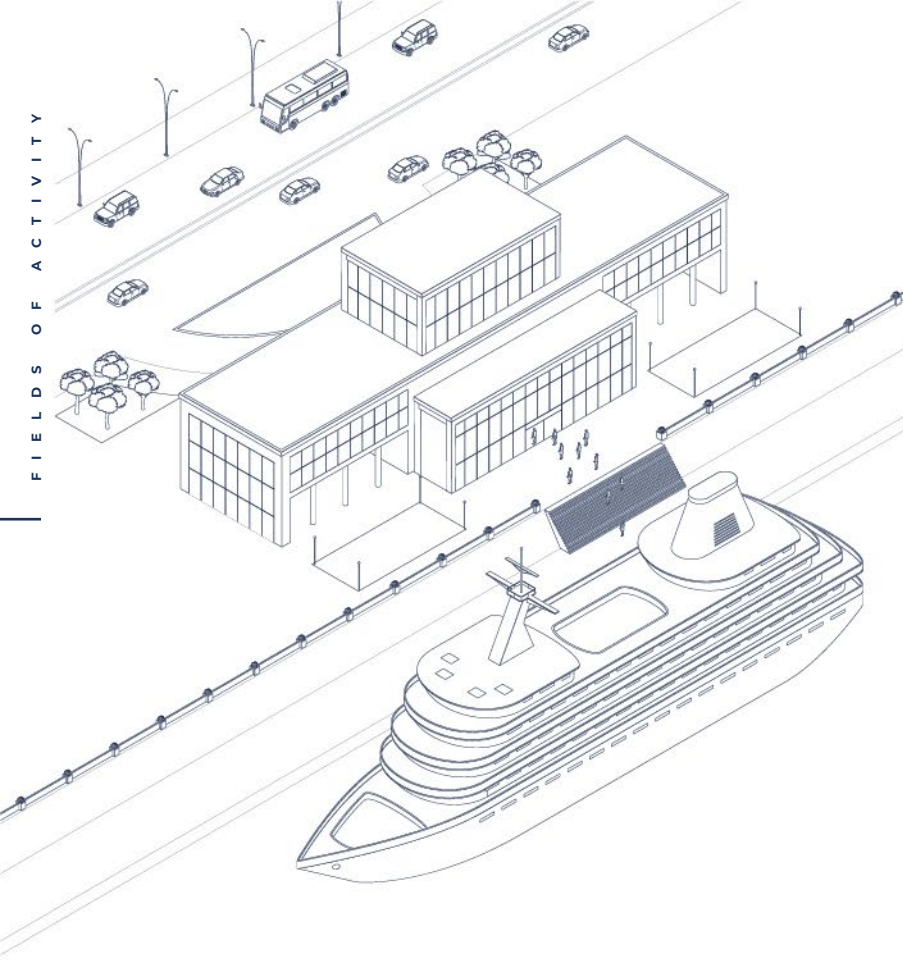


Naval Shipyards



Multipurpose Marine Installations





PASSENGER AND RECREATIONAL PORTS

Cruise Terminals

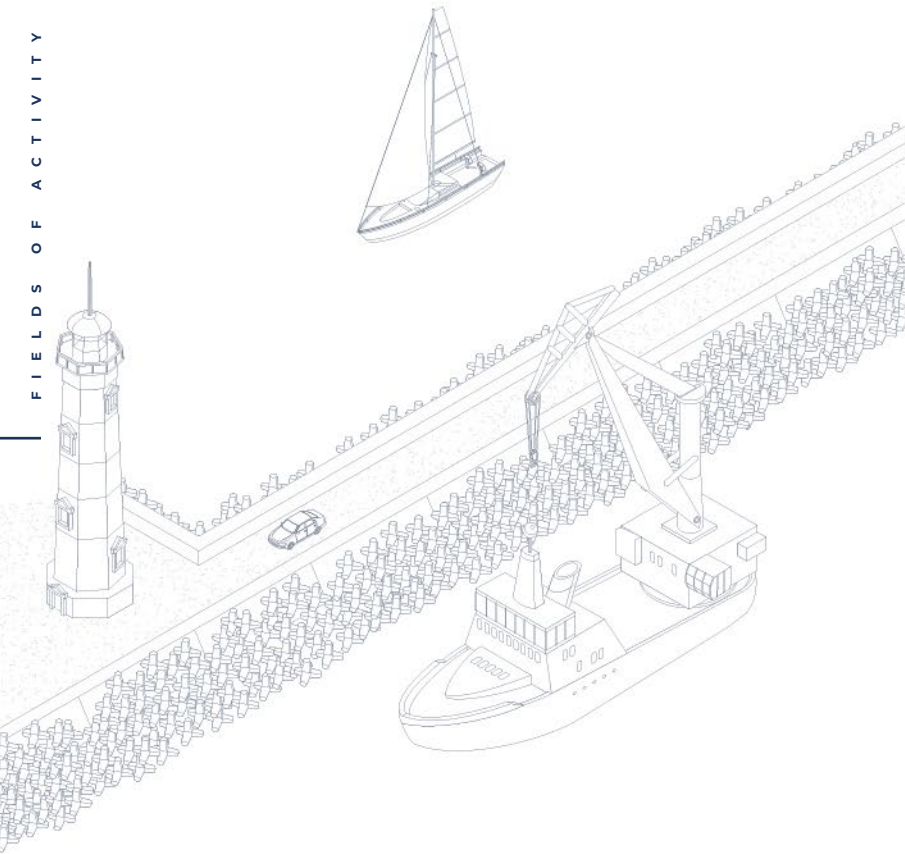


Ferry Terminals



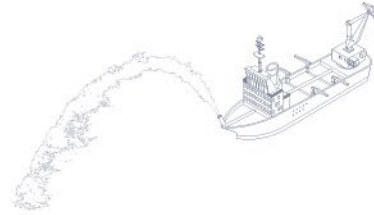
Marinas



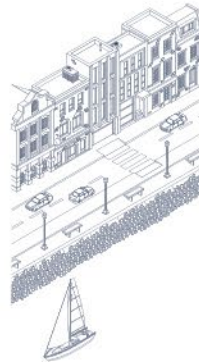


COASTAL ENGINEERING

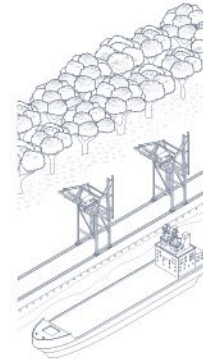
Dredging and Reclamations



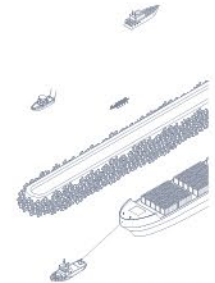
Coastal Protection



Environmental Impact Assessment



Breakwaters



CAPABILITIES

PORT PLANNING AND TERMINAL DEVELOPMENT

VALUE ENGINEERING - CONSTRUCTION METHODOLOGIES

QUAY WALLS AND JETTIES

VESSEL BERTHING, MOORING AND TRANSFER FACILITIES DESIGN

MATERIALS HANDLING

MARINE HYDRAULICS - INTAKE AND OUTFALL PIPELINES

MARINE ENERGY TRANSITION ANALYSIS

DREDGING AND RECLAMATION

BREAKWATERS AND COASTAL PROTECTION

SERVICES PROVIDED

FEASIBILITY STUDIES

FRONT END ENGINEERING DESIGN (FEED)

DETAILED ENGINEERING AND DESIGN

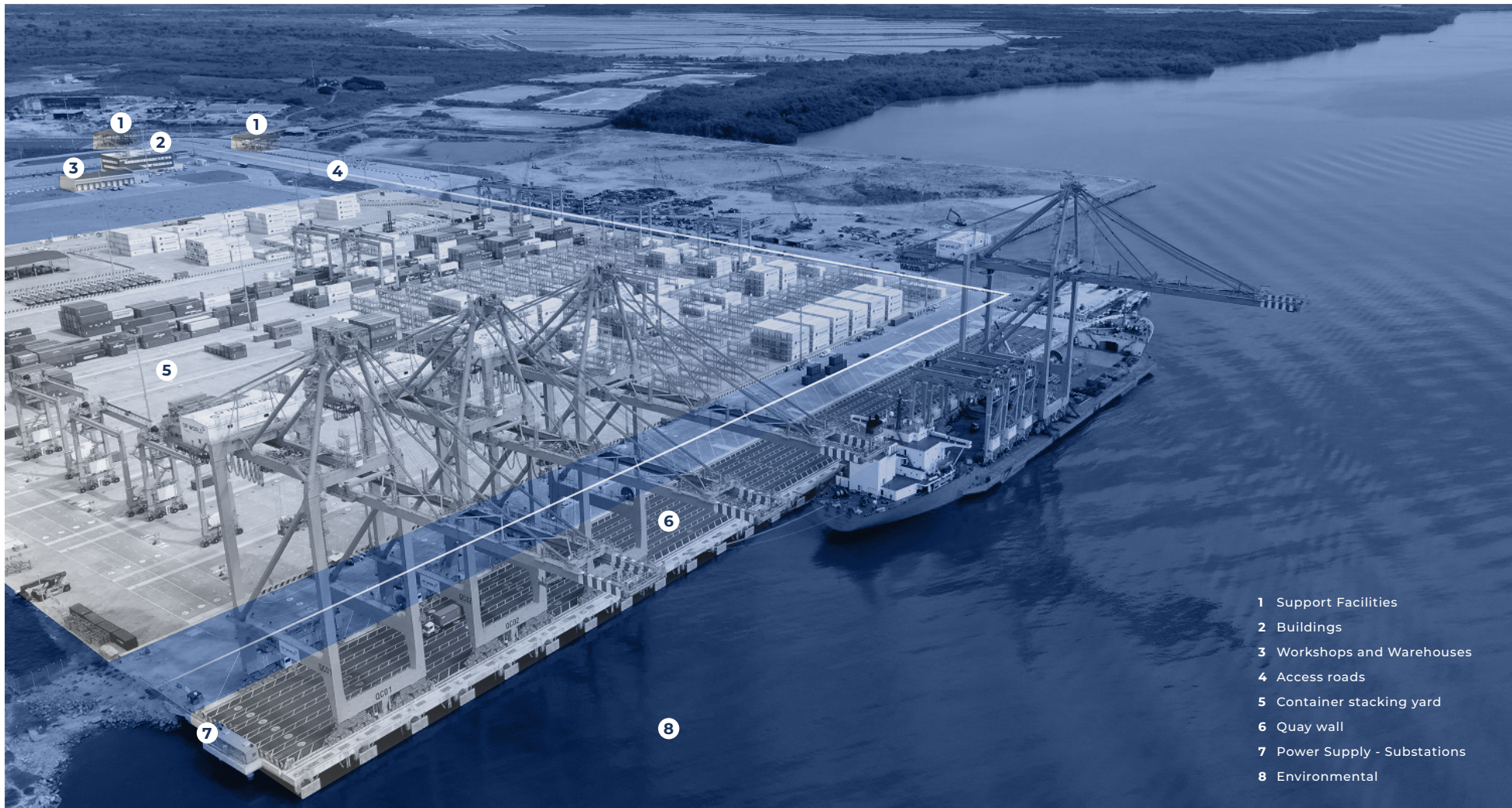
TECHNICAL SUPPORT

CONTRACT ADMINISTRATION AND SITE SUPERVISION

COST ESTIMATION

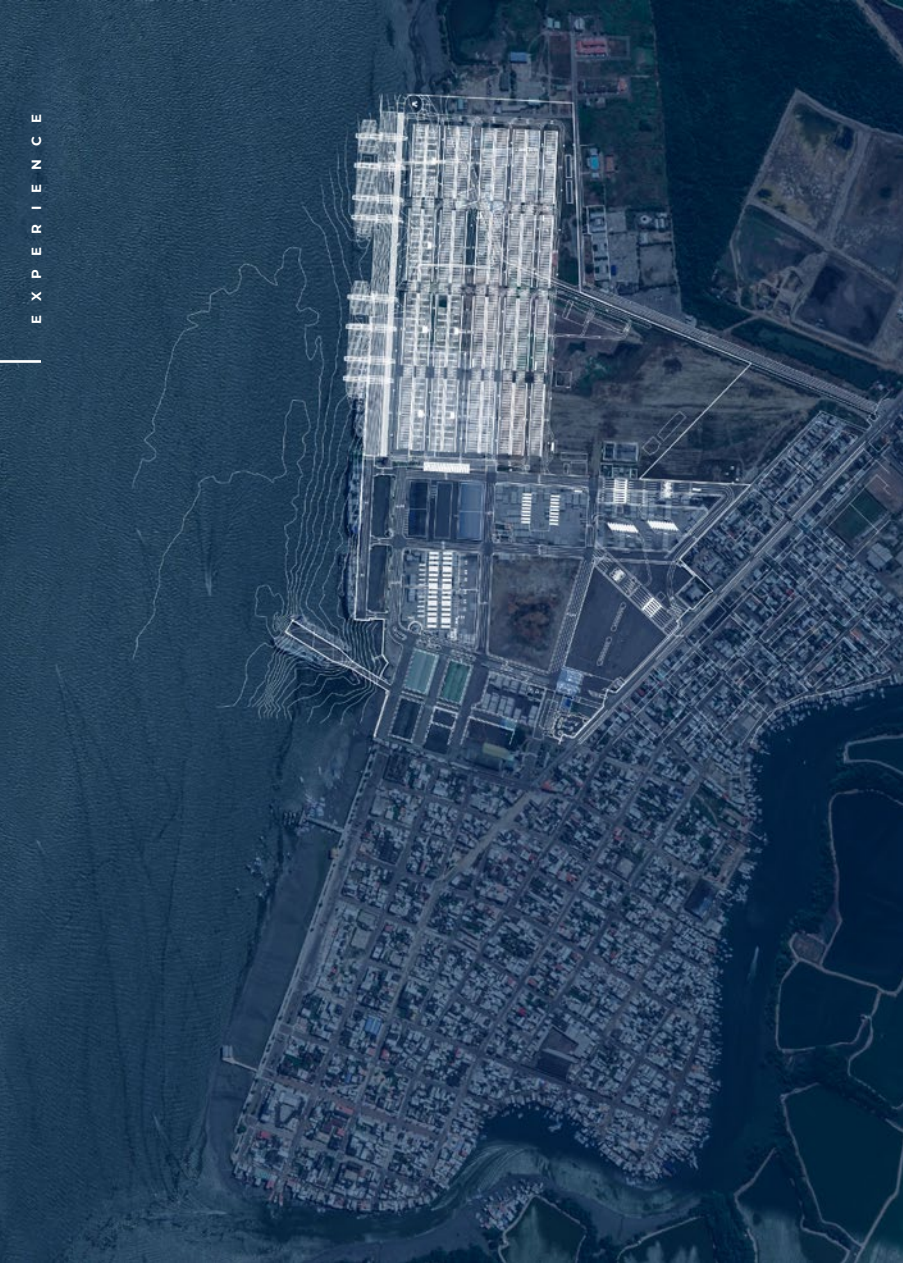
EIA: ENVIRONMENTAL ASSESSMENTS

BIM SOLUTIONS



- 1 Support Facilities
- 2 Buildings
- 3 Workshops and Warehouses
- 4 Access roads
- 5 Container stacking yard
- 6 Quay wall
- 7 Power Supply - Substations
- 8 Environmental

EXPERIENCE



PORT & TERMINAL DEVELOPMENT

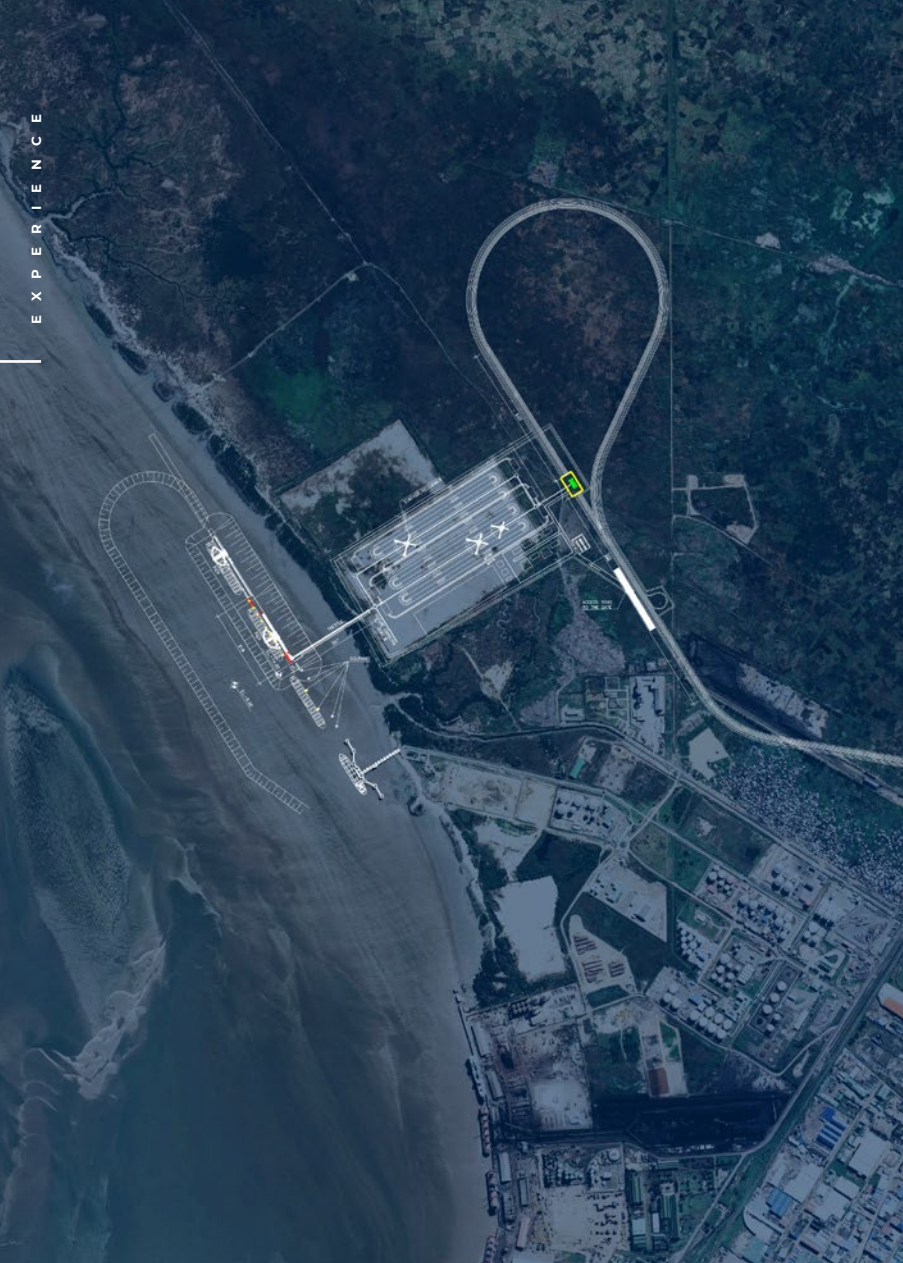
MULTIPURPOSE TERMINAL BOLIVAR PORT

Country

Ecuador

Scope of Works

· Port and Terminal development and preliminary design



PORT & TERMINAL DEVELOPMENT

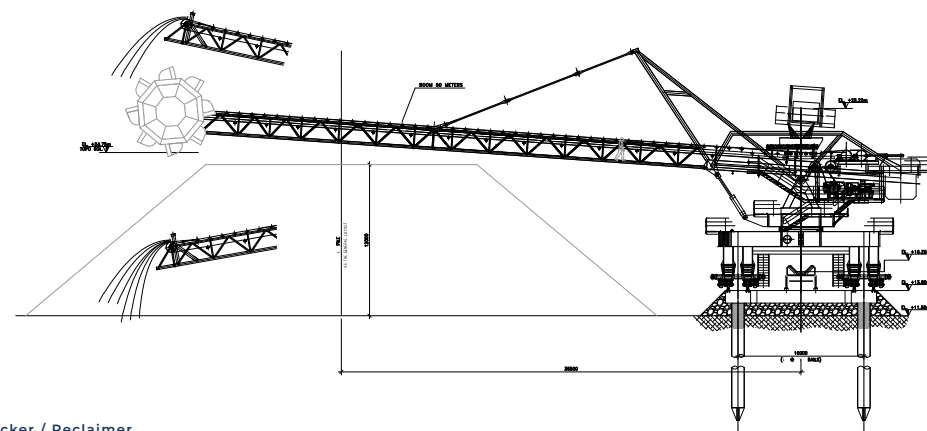
COAL TERMINAL BEIRA

Country

Mozambique

Scope of Works

- Port Design solution for design & build tender process
- Detailed design
- Metocean Studies
- Marine Hydraulics and navigation studies



Stacker / Reclaimer



PORT & TERMINAL DEVELOPMENT

PORT COMPLEX PORT OF DANDE

Country

Angola

Scope of Works

- Port Design solution for design & build tender process
- Detailed design
- Metocean Studies
- Marine Hydraulics and navigation studies





PORT & TERMINAL DEVELOPMENT

CRUISE TERMINAL SALAVERRY

Country

Peru

Scope of Works

· Port and Terminal development and preliminary design



BULK TERMINALS

LNG TERMINAL MELCHORITA

Country

Peru

Scope of Works

- Port Detailed design
- Project and contract management
- Temporary construction structures development – Cantitravel and Terminal development and preliminary design





BULK TERMINALS

PIER III IRON ORE TERMINAL PONTA MADEIRA

Country

Brazil

Scope of Works

- Detailed design for jetty and berth construction
- Temporary construction structures development – Cantitravel





BULK TERMINALS

LIQUID BULK TERMINAL DORALEH

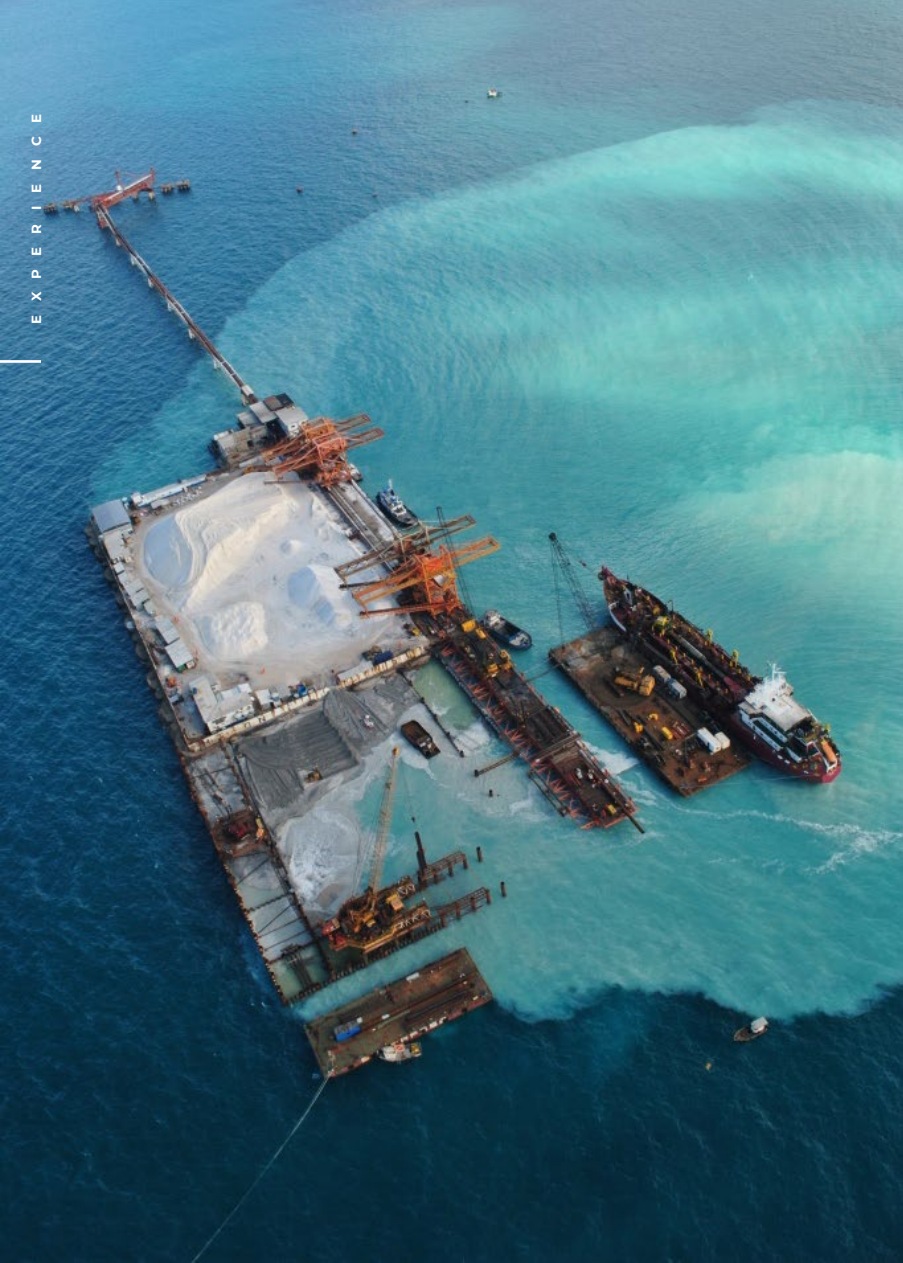
Country

Djibuti

Scope of Works

- Jetty and berth Design tender process
- Port Expansion Masterplan
- Jetty Detail design for construction
- Temporary construction structures development – Cantitravel





BULK TERMINALS

SALT OFFSHORE TERMINAL AREIA BRANCA

Country

Brazil

Scope of Works

- 15000m² Artificial Island Design with berth facilities for 75000 DWT Vessels
- Detailed Design for 500m conveyor belt bridge
- Technical Assistance
- Temporary construction structures development – Cantitravel





BULK TERMINALS

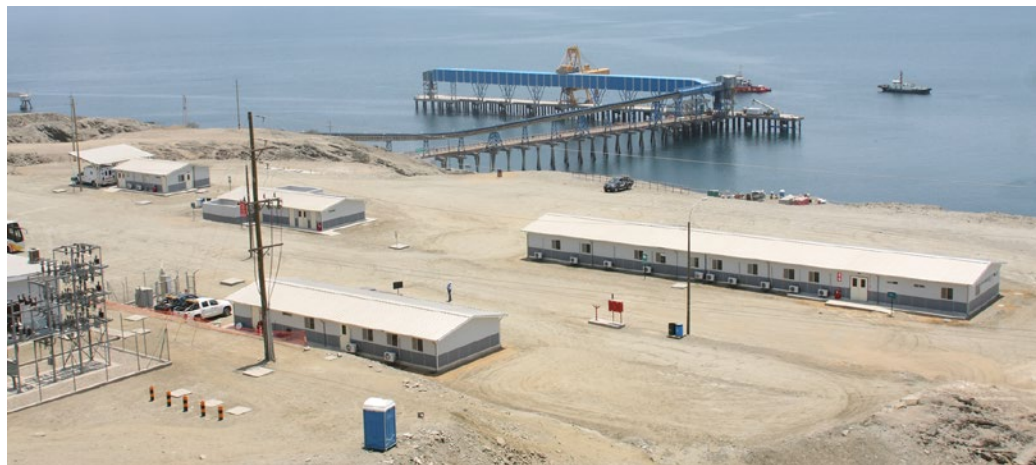
PHOSPHAT TERMINAL BAYOVAR

Country

Peru

Scope of Works

- Detailed Design for jetty and berth facilities for 75000 DWT Vessels
- Technical Assistance
- Temporary construction structures development – Cantitravel





BULK TERMINALS

COAL TERMINAL PERAVIA

Country

Dominican Republic

Scope of Works

- Port Design solution for design & build tender process
- Temporary construction structures development – Cantitravel
- Detail design for construction





BULK TERMINALS

BULK TERMINAL MATARANI

Country

Peru

Scope of Works

- Port Design solution for design & build tender process
- 170m Access bridge and 260m Quay Wall detailed design
- Material Handling Equipment - Shiploaders
- Temporary construction structures development – Cantitravel
- Detail design for construction





BULK TERMINALS

BULK TERMINAL - BAUXITE TROMBETAS

Country

Brazil

Scope of Works

- Port Design solution for design & build tender process
- Initial existing port Structural Assessment
- Detail design for jetty and berth construction – for 80000DWT Vessels





CARGO TERMINALS

MULTIPURPOSE TERMINAL POSORJA

Country

Ecuador

Scope of Works

- Preliminary Design for 14000 TEU terminal
- 400m Quay Wall
- Container Yard Detailed design
- Construction Methodology – Cantitravel Design
- Detail design for construction





CARGO TERMINALS

MULTIPURPOSE TERMINAL BERBERA

Country

Somalia

Scope of Works

- Port Design solution for design & build tender process
- 400m Quay Wall detailed design -Combiwall
- Temporary construction structures development – Cantitravel





CARGO TERMINALS

CONTAINER TERMINAL DORALEH

Country

Djibuti

Scope of Works

- 1050m Quay Wall design
- Container Yard design
- Temporary construction structures development – Cantitravel
- Technical Assistance at project location





CARGO TERMINALS

MULTIPURPOSE TERMINAL MARIEL

Country

Cuba

Scope of Works

- 2400m Quay Wall detailed design
- Container Yard layout detailed design
- Admin Buildings, Mechanic Workshops and storage warehouses detailed design
- Temporary construction structures development – Cantitravel





CARGO TERMINALS

CONTAINER TERMINAL SANTOS

Country

Brazil

Scope of Works

- Port Design solution for design & build tender process
- 1100m Quay Wall detailed design
- Container Yard layout detailed design
- Temporary construction structures development – Cantitravel





CARGO TERMINALS

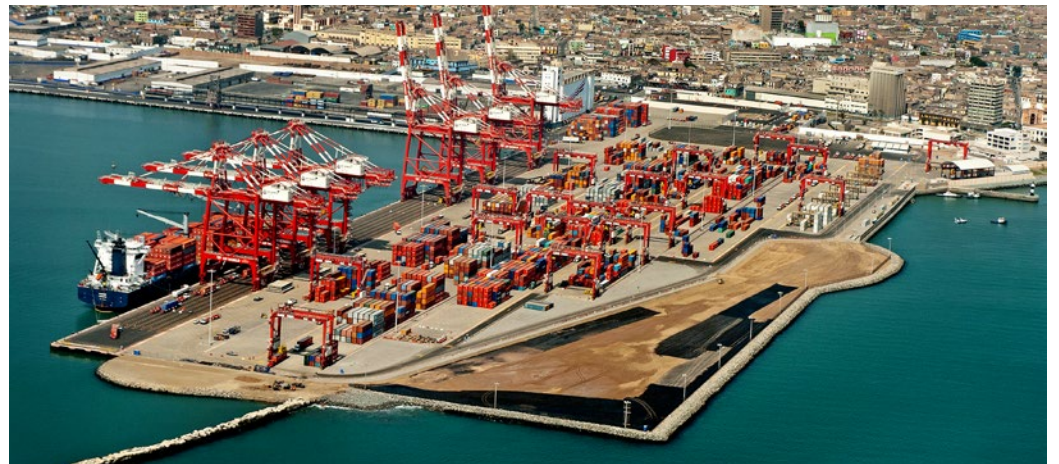
CONTAINER TERMINAL CALLAO

Country

Peru

Scope of Works

- Port preliminary Design solution
- 650m Quay Wall detailed design
- Container Yard layout detailed design
- Temporary construction structures development – Cantitravel





CARGO TERMINALS

GENERAL CARGO TERMINAL PRAIA

Country

Cape Verde

Scope of Works

- Technical and engineering support
- HSEQ management during construction





VALUE ENGINEERING - CONSTRUCTION METHODOLOGY
TEMPORARY CONSTRUCTION STRUCTURES

PILE DRIVING FLOATING TOWER ITAPOÁ PORT

Country

Brazil

Scope of Works

· Piling Tower development and structural design





Santos Container Terminal, Brazil

VALUE ENGINEERING - CONSTRUCTION METHODOLOGY TEMPORARY CONSTRUCTION STRUCTURES

CANTITRAVELERS

Countries

Brazil, Peru, Ecuador, Algeria, Angola, Dominican Republic, Djibouti, Somalia

Scope of Works

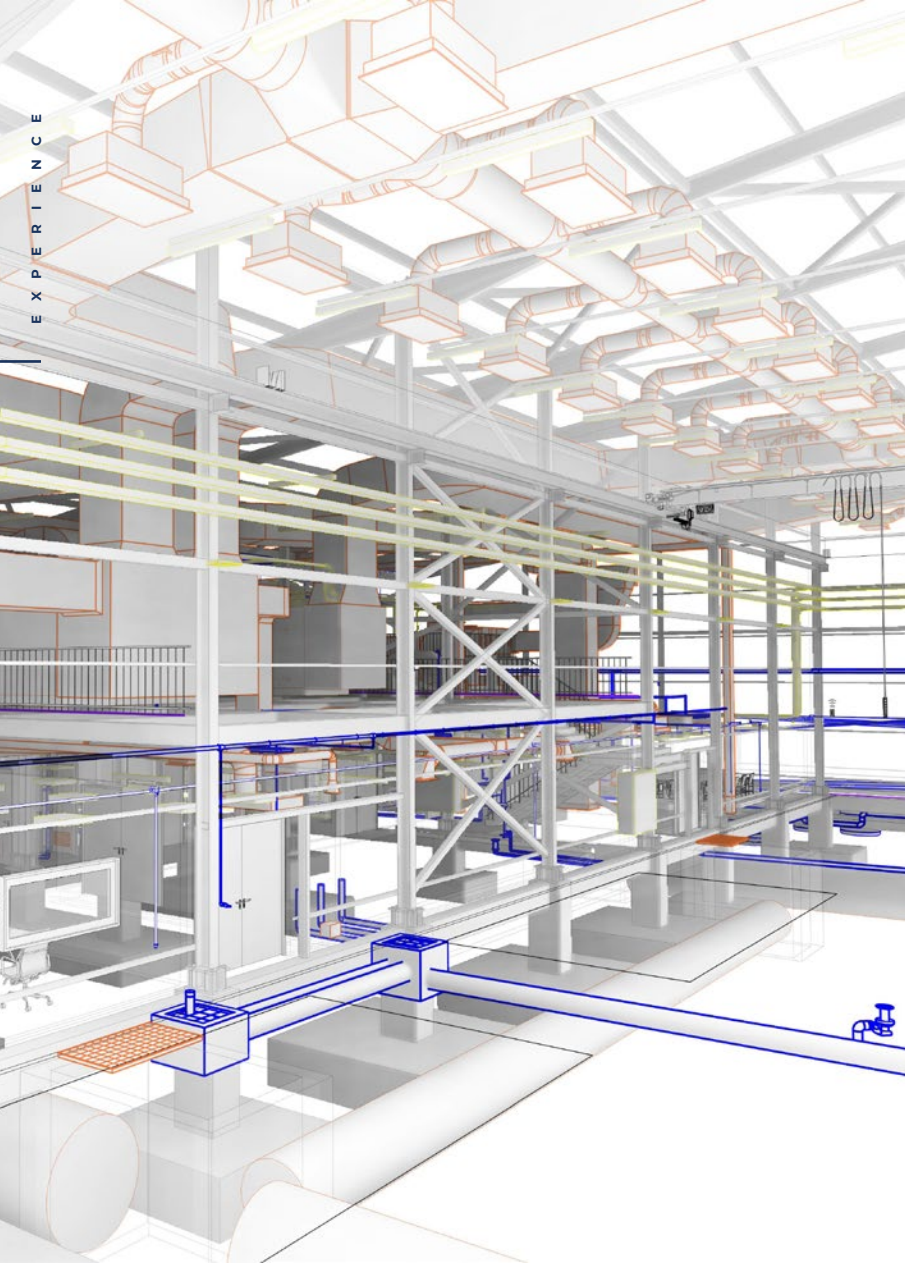
For more than 25 years, EXE QUADRANTE has conceived of more than 30 temporary structures to support quay wall construction works. These bespoke, and project specific structures, either cantitravelers or pile driving barges, are particularly suitable for the most common type of quay wall, most specifically deck on piles and combiwall structures.



Arzew Fertilizer Terminal, Algeria



LNG Terminal Melchorita, Peru



VALUE ENGINEERING - BIM

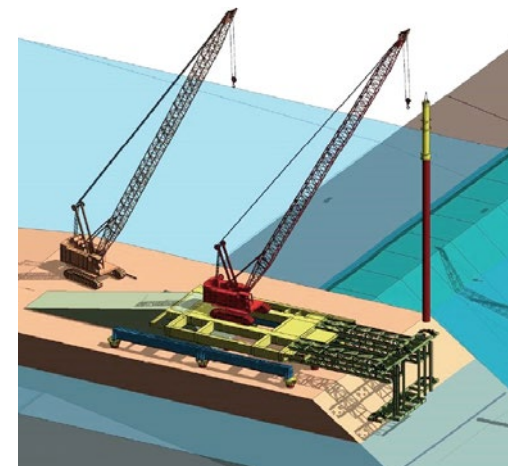
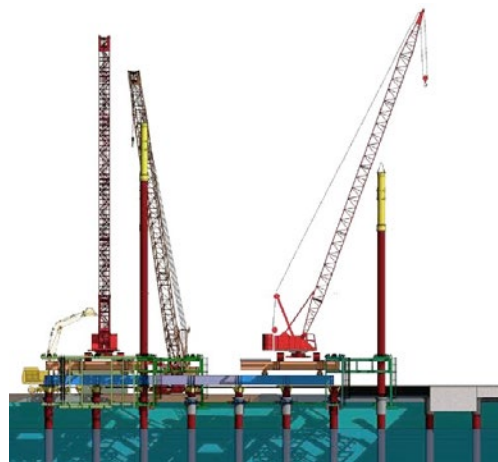
BIM - BUILDING INFORMATION MODELING

Countries

Brazil, Portugal and Ecuador

Scope of Works

EXE QUADRANTE set off using BIM processes across all phases of the project lifecycle as early as 2015. In EXE-QUADRANTE, BIM is about providing the right data to support decision-making at very early stages of the project, enabling efficiency and accuracy, adding value and encouraging greater synergies between all stakeholders, and most significantly, deliver greater predictability throughout the entire project lifecycle.





COASTAL ENGINEERING

COASTAL PROTECTION AND BREAKWATERS

Countries

Portugal, Panamá, Brazil e Djibuti

Scope of Works

- Coastal protection studies
- Detail design for rock revetment
- Marine Hydraulics and wave studies





COASTAL ENGINEERING

DREDGING AND RECLAMATION

Countries

Somaliland, Brazil and Mozambique

Scope of Works

- Waterways, access channels and berth pockets design
- Dredging and Reclamation Design





COASTAL ENGINEERING

INTAKE AND OUTFALL PIPELINE JAGUARIBE

Country

Brazil

Scope of Works

· 3271m lenght pipeline design





COASTAL ENGINEERING

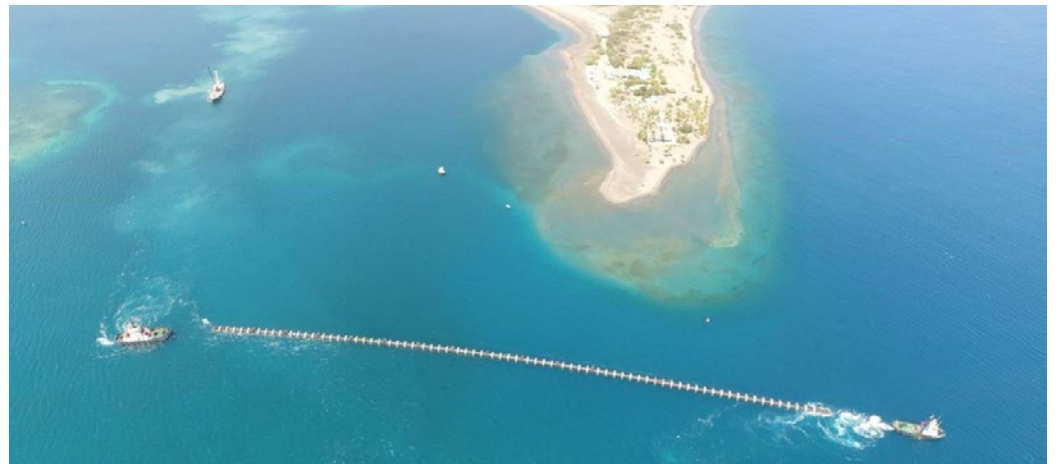
INTAKE AND OUTFALL PIPELINE PUNTA CATALINA

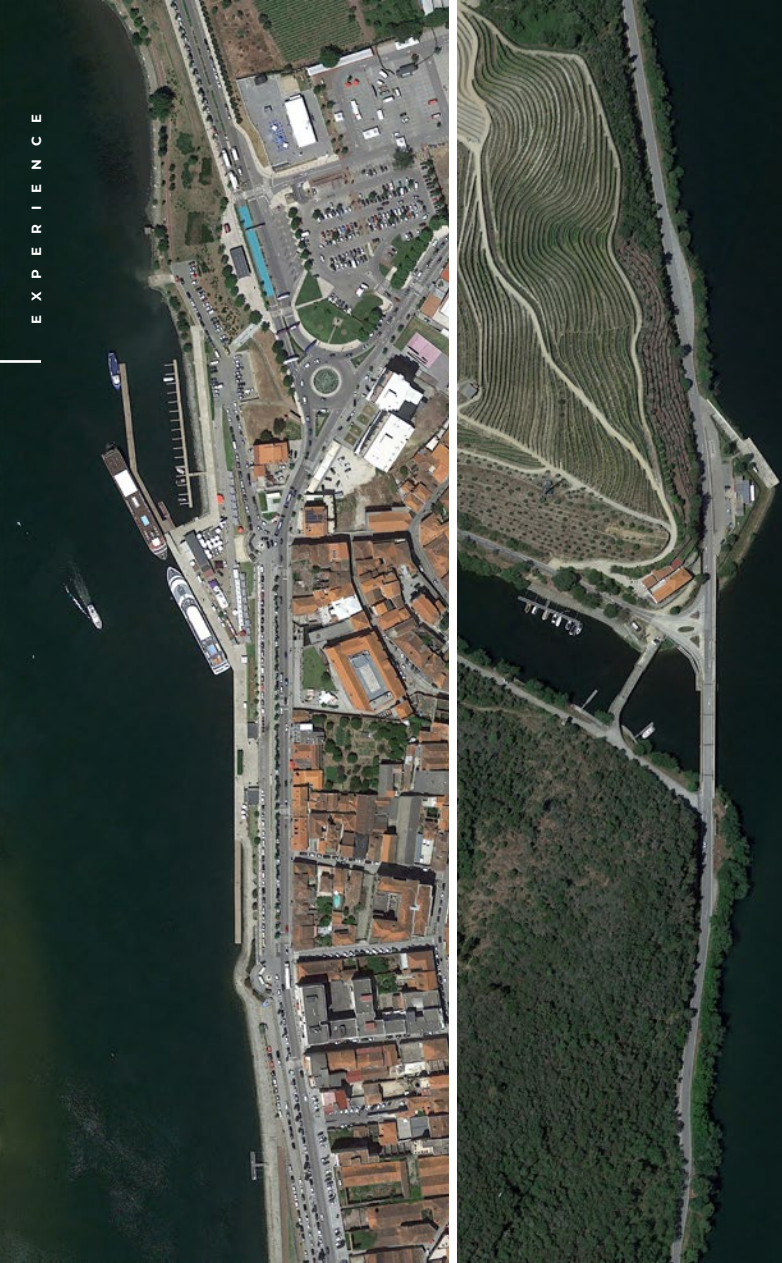
Country

Dominican Republic

Scope of Works

- 1050m length and 2,5m diam. pipeline design





PASSENGER AND RECREATIONAL PORTS

INLAND PORTS

Country

Portugal

Scope of Works

- Detailed Design
- Technical Assistance



Peso da Régua



Foz do Távora

WHO WE ARE

RUBENS SABINO (EXE-ENGENHARIA)

TIAGO COSTA (QUADRANTE)

NUNO CORREIA (EXE-QUADRANTE)



RUBENS SABINO

Managing Director
Civil Engineer, PIANC Member

Rubens Sabino is the founding partner of EXE ENGENHARIA. With over 40 years of experience in port and marine engineering, in Brazil, South America, Central America and Central Africa. With a degree in Civil Engineering from Universidade Federal Fluminense, his experience includes, among others, the development of container general cargo and bulk terminals, maritime foundations, special structures and shipyards.

During the last twenty years, Mr. Sabino has driven EXE ENGENHARIA to take part in several design and construction projects in many countries such as Djibouti, Peru, Equador, Colombia, Guine Bissau, Morocco, Namibia, Angola, Cuba, Chile, Mozambique, Argentina, Guatemala, Panama, Dominican Republic, Libya, Guatemala, Algeria, Venezuela, Brunei and Indonesia.

At EXE-QUADRANTE, Rubens is also responsible for the Latin American market.

Main projects

- Iron Ore Terminal Píer III - Ponta da Madeira – Brazil;
- Doraleh Bulk Terminal – Djibouti;
- Callao Container Terminal – Peru;
- Punta Catalina Port – Dominican Republic;
- Itapoá Pile Driving Barge – Brazil;
- Paranaguá Port - Píer “F” – Brazil



TIAGO COSTA

Managing Director
Structural Engineer, MBA

Tiago Costa is one of the founding partners of QUADRANTE and is responsible for the Transports Business Unit (Roads and Motorways, Railways, Structural Works, Ports and Tunnels) and for the markets in Ghana, Peru and Chile. Costa has 20 years of experience in Design and Coordination of major road subconcession projects, general construction and structural works, and urban infrastructure in Angola, Algeria, Brazil, Ghana, Mozambique and Portugal. He has recently been involved in railway projects in Portugal and the United Kingdom. He has a degree in Civil Engineering from IST and an MBA.

Main projects

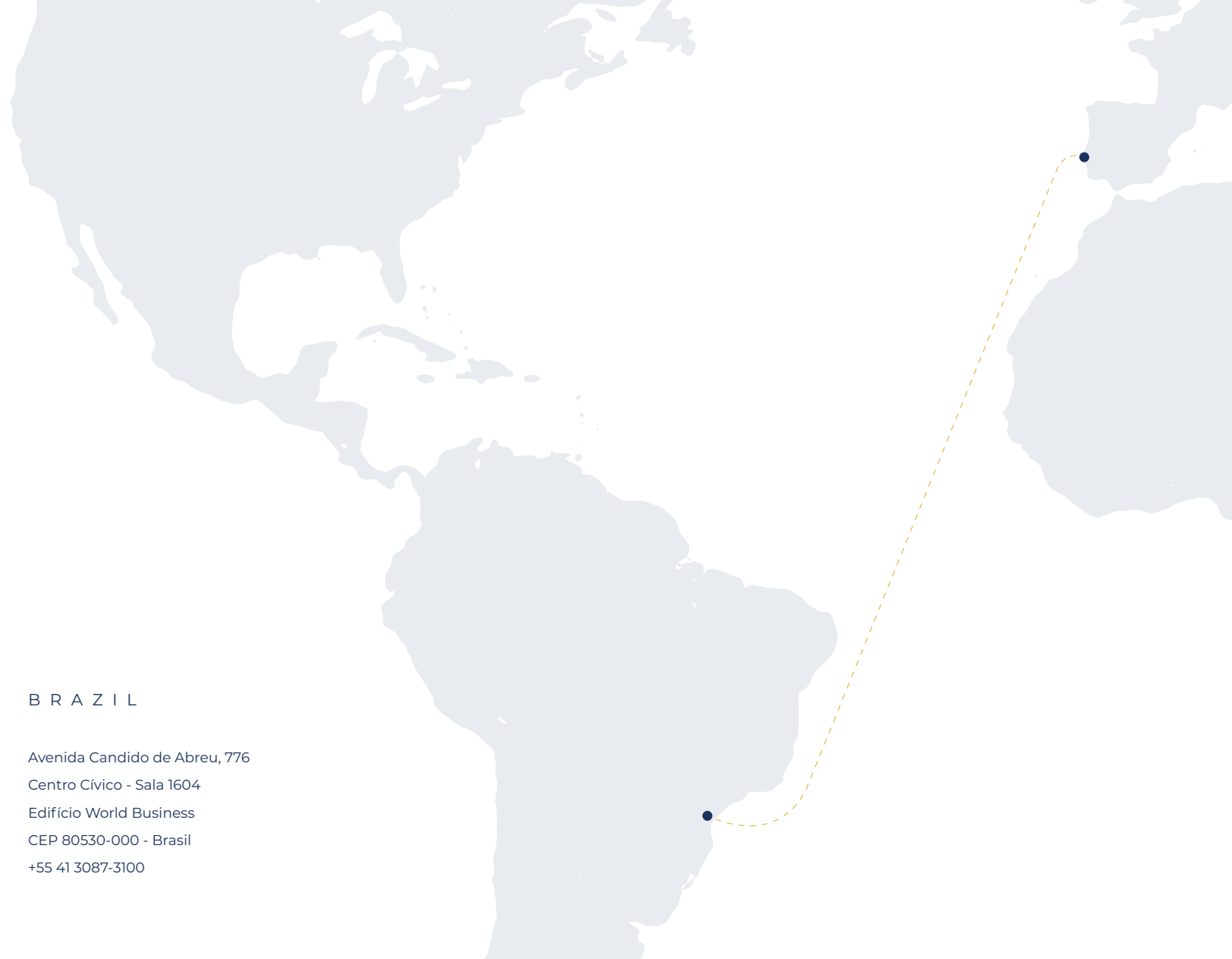
- Railroad project Kano - Maradi / Kano – Dutse | 400km - Nigeria;
- Highway project Accra / Tema | 32km - Ghana;
- Panamericana highway project – Panamá;
- Project and contract management on several Highway projects - Portugal;
- Hassi Messaoud e Sidi Abdelah new city project – Algeria



NUNO CORREIA

Client Manager
Civil Engineer, PMP, PMI

With over 15 years' experience in the maritime, harbour and urban infrastructure construction sector, Nuno Correia holds a Master's degree in Civil Engineering from FEUP and is PMP-certified by PMI. Throughout his career, he has accumulated vast experience in large-scale projects, from conception to execution, with a focus on technical-commercial coordination, strategic planning, contract execution and contract management. With a strong international track record, acquired in Tier 1 construction companies, Nuno has collaborated on projects in Europe, Africa and Latin America, leading teams in the drafting and negotiation of complex contracts. He stands out for his ability to promote collaboration in cross-functional environments, ensuring high standards of quality and safety. He currently works as Client Manager for the maritime projects at EXE-QUADRANTE



P O R T U G A L

Alfrapark
Estrada do Seminário 4
Edifício C - Piso 1 Sul
Alfragide 2614-523 Amadora
+351 210 067 200

B R A Z I L

Avenida Candido de Abreu, 776
Centro Cívico - Sala 1604
Edifício World Business
CEP 80530-000 - Brasil
+55 41 3087-3100

exe | **QUADRANTE**

WWW.EXE-QUADRANTE.COM

© 2021 EXE-QUADRANTE. All rights reserved